



CANSUPPORT

January - March 2026 | LXXV

www.cansupport.org

19th CanSupport Walk for Life - Stride Against Cancer Edition



From the Founder-President's Desk

Dear supporters,

You are a precious resource for us. Your presence for our flagship event, i.e., CanSupport Walk for Life - Stride Against Cancer, shows your commitment to stand up to cancer. We need you to help us spread the message of cancer prevention far and wide and also to alert people to the fact that cancer when caught early can be treated and cured. The cancer survivors amongst us today are a living testimony to this. Their courage and "never say die" attitude continues to inspire each one of us as we stride together for a purpose.

The CanSupport Walk for Life remains a rousing event thanks to your energy and lively spirit. We appreciate each one of you for being there, for contributing to our programs and for your fellowship and support. May every step we collectively take bring a sense of joy and serve as a powerful reminder of our shared humanity. Together, we shall overcome.

In solidarity and hope,
Harmala Gupta

Developments in Punjab

CanSupport has significantly bolstered its palliative care infrastructure in the region with two major milestones: the inauguration of a new care centre in Firozpur and the addition of a dedicated outreach vehicle in Bathinda.

A new facility was inaugurated in Firozpur by Kulvin Suri, Director of Operations at the Suri Seva Foundation. The centre is designed to be a sanctuary for the local community, offering comprehensive services that include symptom management, emotional counselling, and psychological support for both patients and their families.

Simultaneously, the Bathinda team received a major operational boost through a partnership with Indian Oil Corporation Limited (IOCL). Under its CSR initiative, 'Aarogyam,' IOCL donated a new vehicle to the centre. This addition is set to transform the team's capacity to deliver free-of-charge palliative care directly to the doorsteps of those in need.

The event was attended by key IOCL officials, including Kapil Dev, Deputy General Manager, Bathinda Terminal, and Sudhanshu Arora, Divisional Retail Sales Head for Punjab & HP, alongside Kulvin Suri. The vehicle would play a critical role in expanding CanSupport's mission through mobile outreach.

Together, these developments mark a powerful step forward in ensuring that compassionate, professional care is accessible to more communities across Punjab and expanding the work being done.



When cancer care overflows hospitals, families and NGOs take the burden

Written by: Aishwarya Khosla

Scan to Read the Full Article



CanSupport features in The Indian Express

A powerful new piece by Aishwarya Khosla in The Indian Express sheds light on the invisible burden of cancer - a reality that spills from overwhelmed hospitals onto city pavements and into the hearts of struggling families. From the crowded footpaths outside AIIMS to the quiet sanctuary of our day-care centres, Khosla explores how NGOs like CanSupport bridge the critical gap between "cure" and "care." Through conversations with our team, the article highlights our vital role in providing pain management, nutrition, and emotional counseling whilst honouring the dignity & quality of life we provide to the patients.



PROGRAM HIGHLIGHTS

January - March 2026

Home Care

- Teams: **47**
- Home Visits: **16,823**
- New Patients Enrolled: **1,336**
- Concurrent Patients: **3,896**

Outpatient Clinics

- Teams: **10**
- New Patients Enrolled: **1,533**
- Patient Visits: **8,730**

Resource Facilitation

- New Patients Enrolled: **1,467**
- Funds mobilised for tests and treatments from Central & State Governments: **₹ 36.54 lakh**
- Resources mobilised in-kind for patients through various networks worth: **₹ 48.28 lakh**
- Patients Facilitated: **1,407**

Hospital Based Counselling

- Number of Hospitals: **5**
- Patients Counselling: **2,634**

Day Care

- Sessions Held: **67**
- Caregivers Attended to: **1,148**
- Patients Attended to: **1,489**

Telephone Helpline

- Information Calls Served: **1,756**
- Service Referrals Extended: **306**

HOME CARE SERVICES

Patients and families continue to receive compassionate care & guidance from the Home Care teams across 7 states in India.



PROGRAM HIGHLIGHTS

January - March 2026



DAY CARE



New Day Care at Jamshedpur

Launched this February, our new Jamshedpur Day Care is already making a profound impact. The center offers a much-needed break from the rigors of cancer treatment to the patients and caregivers from nearby settlements. Through creative activities, guidance sessions, and a supportive community atmosphere, we are helping families swap stress for smiles and are thrilled to see the growing participation and deep gratitude from those finding comfort in this space.

Session on Celebrating Connections

The Tanisa Foundation hosted a heartwarming session led by the renowned storyteller Usha Chhabra. Centered on the theme of friendship, the event was a beautiful blend of humour and reflection, illustrating the power of bonds that carry us through life's highs and lows. The air was filled with laughter and song as participants joined in group sing-alongs, turning the session into a true celebration of togetherness.



A Day Out at the Park

The Day Care attendees enjoyed a refreshing picnic at the lush Lodhi Gardens, trading hospital routines for sunshine and greenery. It was a day of pure joy, filled with simple games, shared laughter, and peaceful walks among the spring blooms. This much-needed break offered everyone a chance to recharge in the revitalising fresh air and good company.



A Magical Afternoon for the Young Ones

A special magic show was held for the younger attendees where laughter and surprised gasps filled the room. The magician's mind-bending tricks captured the kids' imaginations and they excitedly cheered and applauded. The interaction provided a fantastic escape and all of them left with a twinkle in their eyes.

COMMUNITY OUTREACH (COR)

Our teams have been hitting the ground running to organise awareness and outreach initiatives across states to engage with communities and share essential information regarding cancer and our services. In **Jamshedpur**, the team joined a food drive by a local trust to share information on palliative care with volunteers and beneficiaries alike.

Meanwhile, in **Bathinda**, Dr. Rajesh Bansal and Avtar Singh took part in a medical camp where they interacted with the attendees and distributed informative handouts. In **Hisar**, the team met with teachers at a government school in Chirod village to raise cancer awareness in the community, as well as,

to encourage them to connect us with anyone in need who may benefit from our free-of-charge services.

The team also conducted a vital session for Transgender Welfare Equity & Empowerment Trust (TWEET) Foundation, **Delhi**, an organisation which aims to empower lives of transgender individuals and encourage the community's visibility in India. With 35 participants and NGO officials in attendance, the session focused on cancer risk factors, prevention, and early detection. Everyone appreciated gaining life-saving health insights shared, with many highlighting how much they valued the interactive nature of the engagement.



Jamshedpur



Bathinda



Hisar



New Delhi

Organise an Awareness Session and/or Cancer Screening Camp in your community!

Contact: navdha@cansupport.org | 9599558368



TRAINING, EDUCATION & RESEARCH

CanSupport at IAPCON 2026 Hyderabad

CanSupport participated in the 33rd Annual International Conference of the Indian Association of Palliative Care (IAPC), held at Ni-MSME, Hyderabad. Themed "Continuum of Care: Hospital, Hospice, and Home," the conference brought together palliative care professionals from across the country to advance the shared mission of striving for a seamless, comprehensive care at every stage of a patient's journey, emphasizing collaboration and holistic support in diverse settings.

Harmala Gupta joined as a panelist for the discussion on 'Sustaining and Financing Care Models' and a spirited 'Hospice Shark Tank' as a 'Shark' where self-styled 'Compassion Capitalists' pitched ideas to the discerning panel. Dr. Jyoti Jethwani presented her qualitative research on the effectiveness of Expressive Art Therapy in improving the psychosocial wellbeing of children and parents battling cancer. Physiotherapist Salma Sattar delivered a poster presentation on integrating palliative physiotherapy for a patient with Pineoblastoma. Dr. Ishita Gandhi chaired the Hospice Care Track, steering a panel discussion on sustaining quality in hospice settings alongside three academic sessions. Anamika Pandey served as a discussant on practical challenges in palliative care delivery. Dr. Reena Sharma, Dr. Smita Handa, Dr. Udita Joshi, and SavitaLuka participated actively across keynotes, scientific sessions, and workshops.



Overall, it was an enriching experience as everyone came together to discuss, and share to continue to advance the field and bolster the palliative care network to expedite its integration into the nation's healthcare system.

CanSupport Annual Foundation Course held at AIIMS, New Delhi



CanSupport's 23rd Annual Palliative Care Continuing Medical Education (CME) and Continuing Nursing Education (CNE), held in collaboration with Dr. BRA Institute Rotary Cancer Hospital, AIIMS Delhi, brought together 137 participants from 15 hospitals, nursing colleges, NGOs, and individual practices for two days of focused learning and meaningful exchange.

Chief Guest K.R. Chawla, former Deputy Drug Controller, Government of Delhi, graced the event alongside Dr. Seema Mishra (AIIMS Delhi), Col. Madhumita Dhall (Rajiv Gandhi Cancer Institute), Prof. Inderpreet Kaur (SOS Nursing School, Faridabad), and Dr. Nithya N (NIMT Institute, Greater Noida) as distinguished Guests of Honour. The academic sessions delivered by eminent faculty from leading institutions, alongside trainers from CanSupport, spanned pain management, symptom control, oncological emergencies, lymphedema, ostomy care, and the legal and ethical dimensions of palliative care. We thank Dr. Bhanu Pratap Arya, Dr. Gaurav Chanana, Dr. Seema Mishra, Prof. Nishkarsh Gupta, Prof. Rakesh Garg, Prof. Sachidanand Bharti, Puneet Rathore, Rituparna, Sandeep Babbar, and Vijay Kumar for their contributions. The training wrapped up with an energising laughter yoga session by the Delhi Laughter group as the participants left with strong appreciation for the program's depth and quality and a keen interest in returning for more.

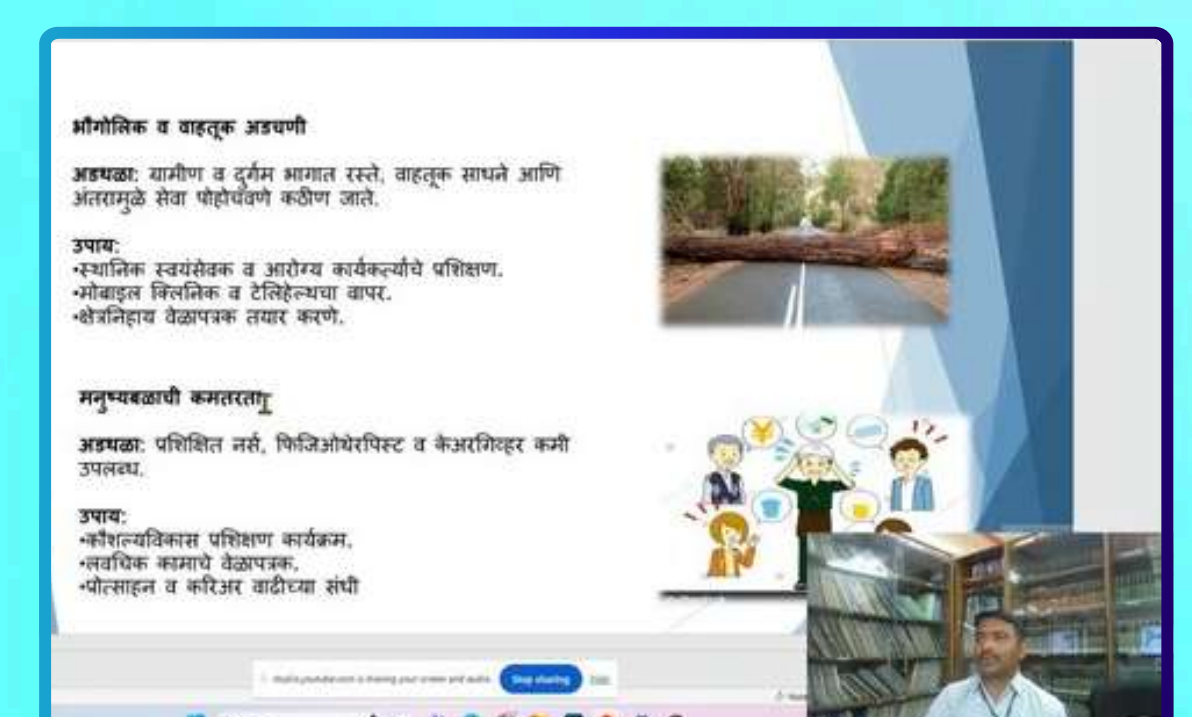
Contribution to State Palliative Care Training Initiative by Pune Team

In a significant stride towards implementing community-based services and healthcare statewide, the National Health Mission (NHM) Maharashtra, in partnership with Pallium India, recently hosted a specialised training program on Integrated Palliative Care.

The comprehensive training targeted a wide spectrum of healthcare providers, including doctors, nurses, Community Health Officers (CHOs), Auxiliary Nurse Midwives (ANMs), and ASHA workers, with the goal of strengthening grassroots capacity for palliative care delivery.

Representing CanSupport Pune, Dr. Santosh Chowdhury and Ganesh were invited as featured speakers to share their expertise. Dr. Chowdhury provided an in-depth look at the strategic planning, implementation, and follow-up processes essential for successful home-based palliative care. Following this, Ganesh addressed the practical hurdles of home care delivery, offering creative solutions through the lens of real-life case examples.

Participants found the sessions deeply enriching and particularly appreciated gaining the life-saving health insights, underscoring the success of this vital initiative to ensure comfort and dignity for patients at their doorsteps.



CanSupport Experts Join High-Level Policy Dialogue at IIC

CanSupport recently contributed to a vital national conversation on the future of elderly care in India. Dr. Ravinder Mohan, NDPS Advisor and Prof. Rama V. Baru, an Honorary Member of Managing Committee, participated as expert discussants in a session titled, 'Adding Life to Years: Building Care Systems for Life of Dignity and Quality,' held at the India International Centre (IIC). The event was organized by the Sectoral Policy Group on Health in association with the Jindal School of Public Health and Human Development, O.P. Jindal Global University. The discussion centered on a pressing national challenge: India's rapidly aging population and the urgent need

requirement for accessible, affordable, and regulated home-based care. A comprehensive paper presentation mapped critical gaps in current services, workforce training, and existing policy frameworks. The participants advocated for a shift toward integrated support systems that combine medical, functional, and social care to meet the holistic needs of the elderly.

For any queries regarding training and research
Contact: savita.luka@cansupport.org | 9818447782



Continuing Education Workshops held in Delhi-NCR

CanSupport conducted two Continuing Nursing Education (CNE) workshops to bring palliative care expertise into clinical practice. At Sant Parmanand Hospital, Delhi, 135 nursing professionals and students attended sessions that earned warm praise from the Hospital Director. In Greater Noida, about 100 B.Sc. Nursing students from Kailash Institute of Nursing and Para-Medical Sciences and Kailash College of Nursing gained hands-on palliative care training. The sessions were facilitated by Prof. Rakesh Garg (IRCH AIIMS), Dr. Ravinder Mohan, Dr. Reena Sharma, Dr. Savera Ahmed, Dr. Smita Handa, Savita Luka, Pallika Choudhary, Physiotherapist Kashif Muqaddam, Sisters Sajani Shrestha, Mini John, and Zuleikha.



Palliative Care Workshops organised across States

The team conducted introductory workshops on palliative care at various hospitals, colleges, and institutes which included Guru Teg Bahadur Hospital, East Delhi (50 staff nurses); Lady Hardinge Hospital (60 staff nurses); Indrayani Cancer Hospital, Pune; Bhagat Phool Singh (B.P.S.) Women's University, Sonipat (60 social-work & psychology students); Dr. Baba Saheb Ambedkar Medical College and Hospital, Rohini (50 nursing staff); and Impact Paramedical and Health Institute, Najafgarh (150 nursing students). The participants got to deepen their understanding of key palliative care concepts and practices.

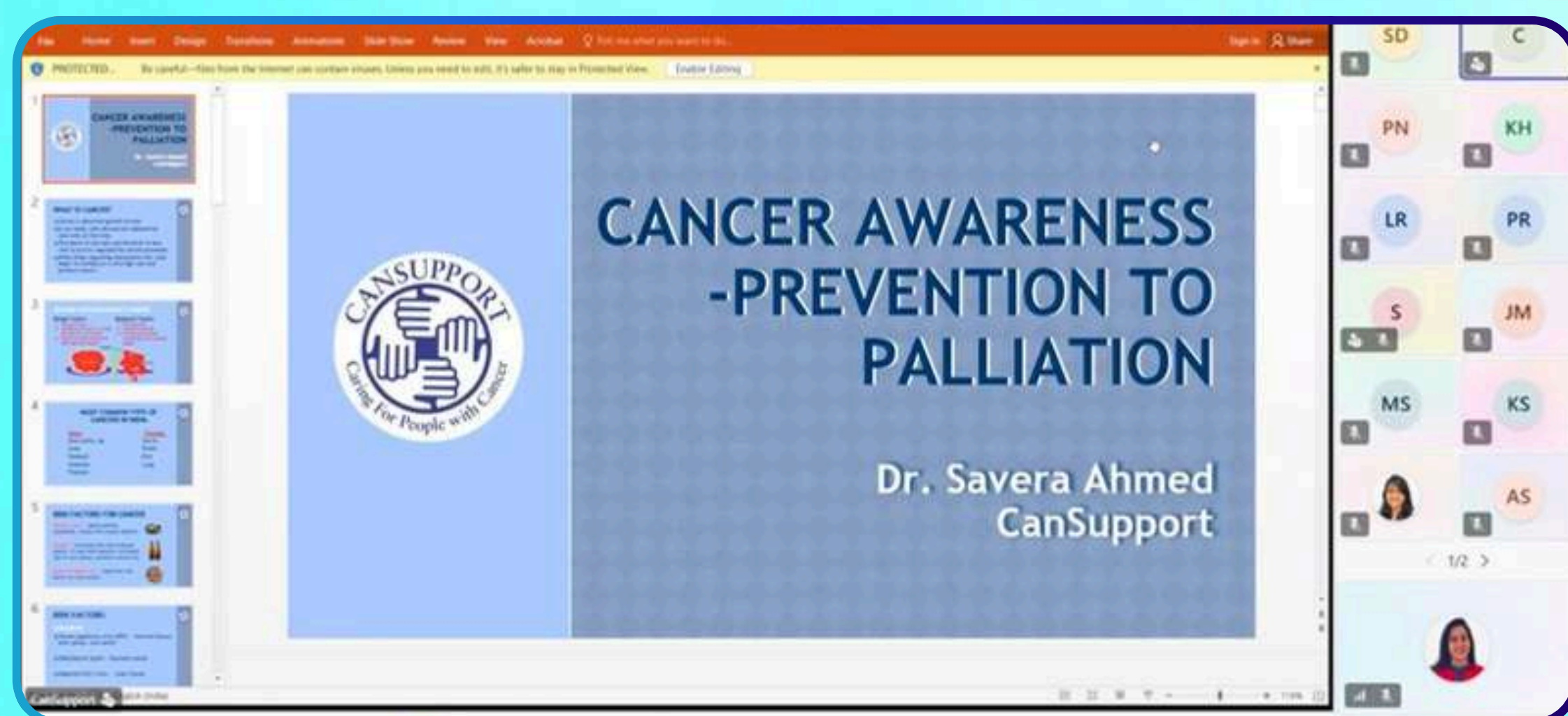


EMPLOYEE ENGAGEMENT ACTIVITIES



Employees at **Worxpertise** organised a special 'Wish Tree' activity at their workplace, mobilising team members to contribute meaningful and practical gifts for CanSupport's Day Care attendees. The collection included warm caps, scarves, socks, masks, and nutritious edibles such as dry fruits and millet. These thoughtfully gathered items were distributed among patients and their caregivers, bringing comfort and cheer while supporting their day-to-day needs.

In sessions held at two of the offices of **Transcom** in Sector 18 and Sector 30, Gurugram, Dr. Ishita Gandhi engaged 25 and 35 staff members respectively in candid, informative discussions about the realities of cancer. From understanding the root causes and risk factors to practical steps around prevention and early detection, participants came away not just informed, but empowered.



Facilitated by Gaurav Agarwal from TATA Power, CanSupport team members tackled one of the most human of challenges i.e., 'Anger Management' as part of the skill development sessions with **Tata ProEngage**. Practical frameworks met honest conversation, and reflective exercises pushed participants to look inward during the workshop, helping them to emerge with sharper tools for emotional regulation and more effective communication in the demanding world of cancer care. As the series drew to a close, the participants expressed their sincere appreciation for the insights and learnings, and most of all, for the training journey that genuinely moved the needle for them.

Dr. Savera Ahmed brought cancer education to the screens of nearly 50 employees of **SMEC India Private Limited**, Gurugram, an SJ Group company. The virtual session had participants leaning in, asking questions, and obtaining clarity they didn't have before. The lively Q&A aided in getting the right information across through sparking real conversation.

EMPLOYEE ENGAGEMENT PROGRAM

Get a fun yet meaningful activity organised for your employees/staff where they can engage with our employees or patients in our care. CanSupport can also hold cancer awareness sessions for them.



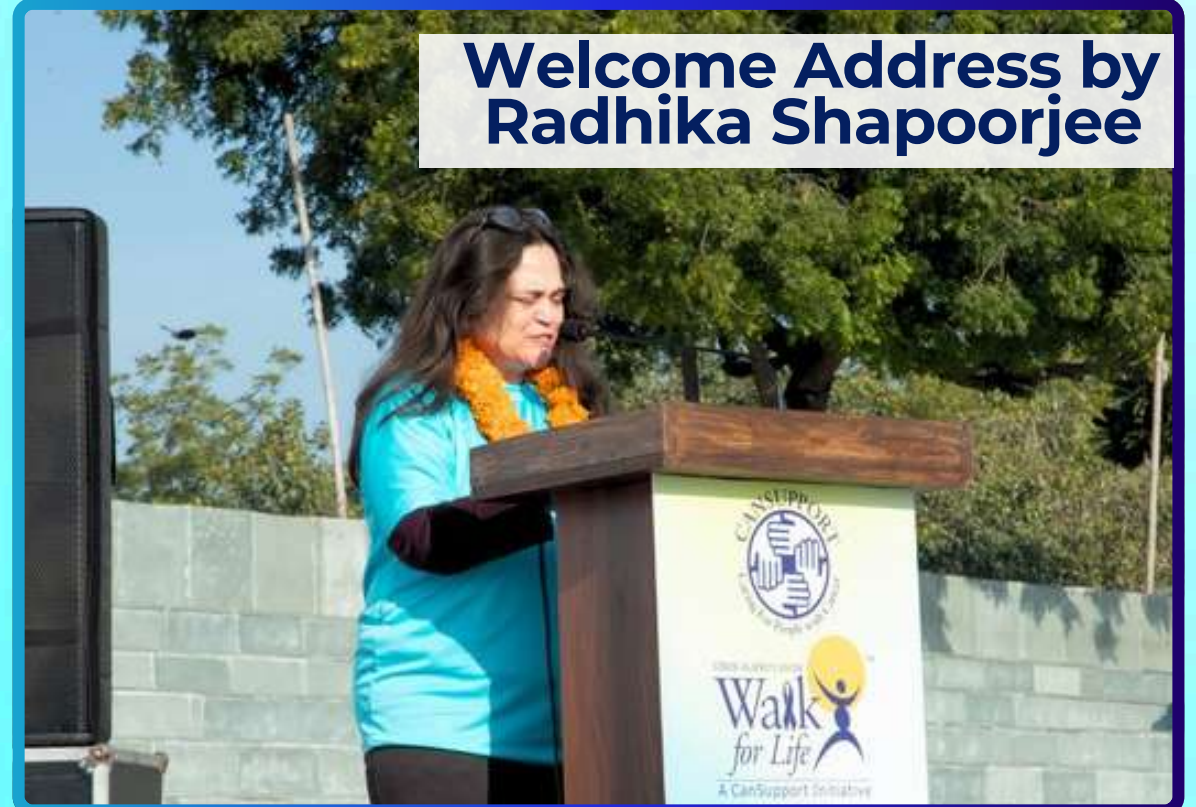
Scan to Learn More



CANSUPPORT WALK FOR LIFE STRIDE AGAINST CANCER 2026

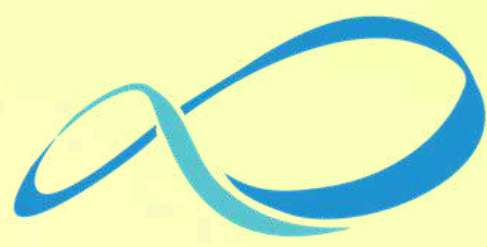
The 19th edition of CanSupport Walk for Life - Stride Against Cancer once again brought together thousands of participants at Jawaharlal Nehru Stadium in a vibrant display of solidarity, hope, and collective action against cancer. Since its inception in 2008, we have organised this landmark event to sensitise the community to the rising incidence of cancer while showing fierce unanimity with patients and their dedicated caregivers.

The morning unfolded with enthusiasm and emotion, featuring Zumba sessions by Shilpa Dance Studio and Sai Aerobics which were followed by a stirring musical set from Music Factory ensuring the crowd was thoroughly warmed up and enthused for the Walk. A particularly poignant highlight was the younger Day Care attendees taking the stage. Curated by the ICANDOIT Theatre Group, these 'star performers' delivered a moving presentation of courage and hope. To further set the tone, a short message from Jeannie Mulford, patron of the Walk and the inspiration behind this movement, was shared. The event was presided over by CanSupport's Managing Committee Member Ravi Bhoothalingam and Secretary Radhika Shapoorjee. Radhika opened proceedings with a warm welcome address, which carried a special message from Founder-President Harmala Gupta.



The Walk was officially flagged off by the eminent guests as they led the participants which included medical leaders, teams from corporates and organisations, students from schools, universities, educational institutions, our volunteers, staff members, and other long-standing supporters, marking a unified commitment to the cause. This was succeeded by the 'Lap of Honour', a symbolic moment dedicated to our cancer survivors, warriors, their caregivers, our long-standing volunteers, and peer support group members. All in signature yellow t-shirts, they announced a new beginning — bold, bright, and unstoppable proof that life goes on beyond cancer. As participants comprised of students, corporates, caregivers, and medical professionals walked together, they carried forward a strong message: cancer awareness saves lives, and no one has to face the journey alone.





CANSUPPORT WALK FOR LIFE - STRIDE AGAINST CANCER 2026

As the riders from Royal Mavericks Club and Red Fort Harley Riders rolled in, the roar of the engines filled the air and instantly got the crowd thrilled. They offered rides to the cancer patients and their caregivers and it was a moment of pure, unbridled joy and freedom for them to be on the powerful motorbikes. At the 'Wall of Honour', the participants penned down heartfelt messages of remembrance, courage, and encouragement; some written for strangers, many written for their loved ones. Across the venue, hand-painted banners and bold slogans bore messages amplifying the message that early detection saves lives, that cancer can be prevented, and that palliative care is not an afterthought but an essential part of the journey.

Through it all, there was never a dull moment. Fun games, a raffle, and a buzzing 'Selfie Corner' kept people engaged. ICANDOIT Theatre Group presented a 'nukkad natak' while Zuleikha from The Storydancer Project wove movement and storytelling into something truly mesmerising. Holding it all together with flair were emcees Abhinav and Sunil who with their quick-witted and warm demeanours ensured the momentum never dipped.



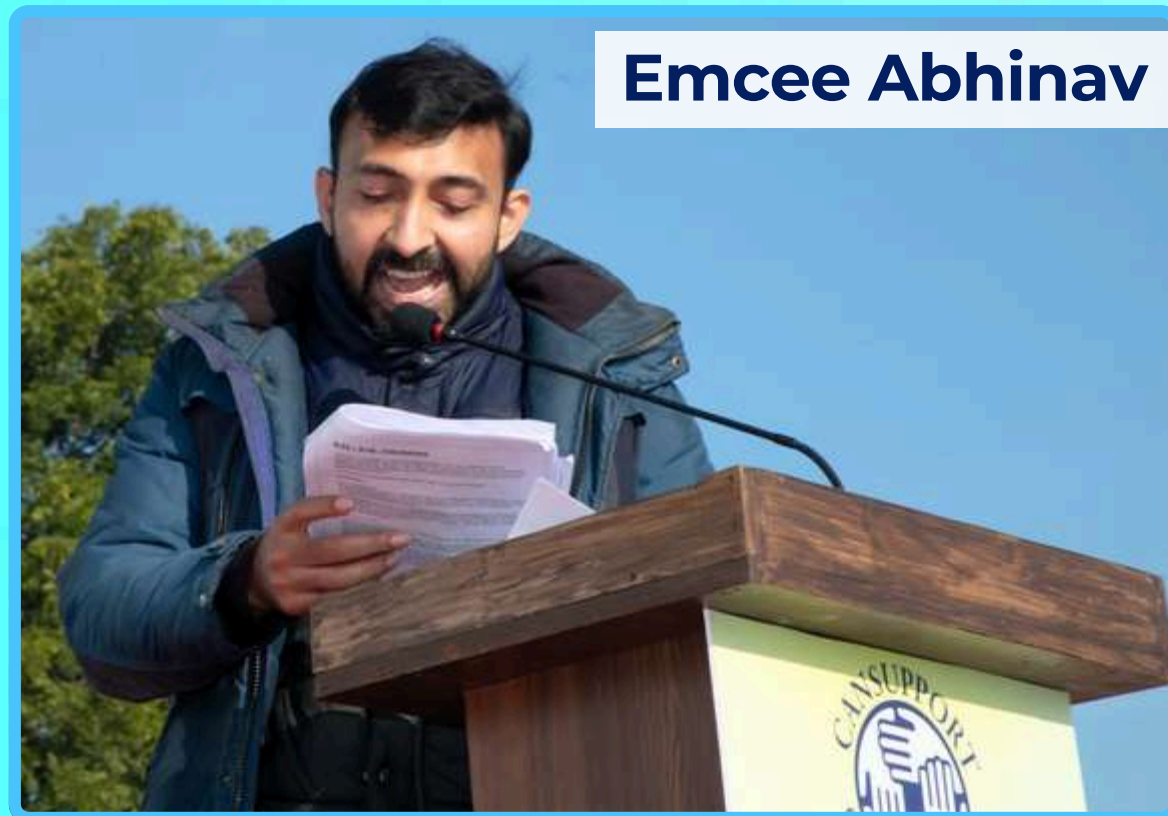
Blood Donation Drive



Red Fort Harley Riders



Royal Mavericks Club



Emcee Abhinav



Emcee Sunil



Zuleikha

For rendering their support and trust, we felicitated our valued partners. The Golden Scroll of Honour was awarded to the Cipla Foundation for its pioneering contribution to palliative care across India. Silver Scrolls of Honour were presented to Optum Global Solutions India Pvt Ltd for a decade of sustained partnership and to EIH Limited for their transformative support of holistic home-based care. SRF Limited, the Event Partner, and AstraZeneca India, the Co-Sponsor, were also recognised for their continued commitment to the cause. Special acknowledgements were given to organisations driving engagement and outreach, including ZS Associates India Private Limited and Adobe for their outstanding employee participation and volunteer support.



Cipla Foundation



Optum Global Solutions India Pvt Ltd



EIH Limited



SRF Limited



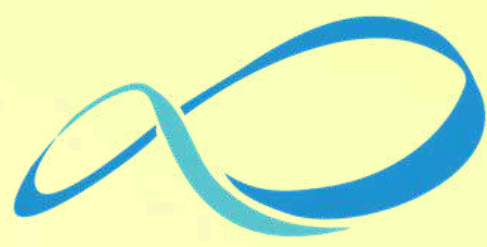
AstraZeneca India



ZS Associates India Private Limited



Adobe



CANSUPPORT WALK FOR LIFE - STRIDE AGAINST CANCER 2026

We also celebrated our wider community through awards for participation and contribution to recognise those who showed up; not just on the day, but in the weeks and months that made it possible. Optum Global Solutions India Pvt Ltd was honoured as the Largest Participating Corporate Institution which further testifies to their team's wholehearted commitment. Pathways School, Baliawas and The Shri Ram School, Mousari were celebrated for their students' boundless enthusiasm in participating in the event and for on-campus organisation of the Walk. United Safe Foundation took home the award for Largest Volunteer Group.

Our partners, too received the recognition they so richly deserve. Tanisa Foundation was honoured for their steadfast Day Care support; Sampann Sewa Sankalp Foundation was celebrated for championing cancer awareness with infectious passion; Max Healthcare was recognised as a Compassionate Partner in the truest sense; ICANDOIT Theatre Group proved that art can carry a message further than words alone; and Dharamshila Narayana Superspeciality Hospital was acknowledged as our Cancer Screening Partner. We are thankful to all of them.



Optum Global Solutions India Pvt Ltd



Pathways School, Baliawas



The Shri Ram School, Mousari



United Safe Foundation



Tanisa Foundation



ICANDOIT Theatre Group



Dharamshila Narayana

As the event drew to a close, successfully executed thanks to all the partners, volunteers, and institutions, once again the power of community in driving change was demonstrated and we urge everyone to return and make the milestone 20th anniversary Walk in February 2027 even bigger.



CANSUPPORT THANKS ALL OF OUR PARTNERS, PARTICIPANTS & SUPPORTERS

Medical Partner



Associate Sponsors



Participating Corporates & Other Groups

- Adobe
- ACS Infotech
- Agilent
- American express GBT
- Antelopus Selan Energy Limited
- APlus Audios
- Aptia
- Asian Development Bank
- AstraZeneca India
- Automat Industries Private Limited
- Avosys Technology Pvt Ltd
- Blessings Astrology
- Cipla Limited
- Cotiviti
- Dataflow Services India Private Limited
- E&Y India
- Genpact India Pvt Ltd
- Global Lawyer
- HeroFin Corp
- Hunar Arts And Handicrafts
- ICICI Bank Ltd
- Idemia India Foundation
- Indigo
- Indogatt exports
- Inner Wheel club of Delhi Achievers
- Inner Wheel club of Delhi Mayur Vihar
- Inner Wheel club of Delhi North
- Inner Wheel club of Delhi Raisina Hills
- Inner Wheel club of Delhi Rising Stars
- Inner Wheel club of Delhi Sainik Farm
- Inner Wheel club of Delhi Vasant Vatika
- Inner Wheel club of Gurgaon Sushant Vatika
- Inner Wheel club of Noida Elite
- Inner Wheel club of Vasant Kunj
- Jindal Stainless
- KPMG Foundation
- Mansukh Finvest Limited
- Maverick Heights Pvt Ltd
- Mercer
- Optum Global Solutions India Pvt Ltd
- Physiogaze
- Pidilite Industries limited
- Reliance Industries Limited
- Scar to star
- Selan Exploration Technology Limited
- Sentiss Pharma
- Seva At Home India Pvt Ltd
- Shades of India
- Shangri-La Eros Hotel, New Delhi
- Siemens Healthineers
- SRF LTD
- Stellaris Specialities India
- Straive
- Sun Life Global Solutions Gurgaon
- Tata Capital Limited
- TATA Consultancy Services
- TE Connectivity India Pvt Ltd
- The Creative Thought
- Vibgyor
- Yoga for well being
- ZS Associates India Private Limited

Participating Academic Institutions

- Aarogya Seva
- Amity Institute of Molecular Medicine & Stem Cell Research
- Amity University
- Cambridge Foundation School
- Chinmaya Vidyalaya
- DPS International, Saket
- FOSTIIMA Business School
- C.D Goenka Public School, East Delhi
- Hansraj College
- Indian Institute of Art and Design
- Indraprastha Global School
- Jaspal Kaur Public School, Shalimar Bagh
- Lotus Valley International school, Noida
- Madhav Institute of Technology & Science
- Management Education Research Institute
- Manava Bharati India International School
- Mata Jai Kaur Public School, Ashok Vihar
- Metro College Of Health Sciences And Research, Greater Noida
- Mira Model School
- O.P. Jindal Global University, Sonipat
- Pathways School, Gurgaon
- Pathways School, Noida
- Pathways World School, Aravali Hills
- Progres Public School
- SAM International School
- Sant Nirankari Public School, Govind Puri
- Saraswathi College of Nursing, Hapur
- Shalom Group of Schools, Gurgaon
- Shiv Nadar School, Gurgaon
- Social Action Mobilizer
- Springdales School Daula Kuan
- SRM Institute of Science and Technology
- Suncity School
- The Frank Anthony Public School, Delhi
- The Knowledge Habitat School, Gurugram
- The Shri Ram Millennium School, Noida
- University of Auckland
- Uttarakhand Public School
- Vinay Nagar Bengali School

Partners & Supporters

- Bisleri International
- Bonn
- Campa Sure
- Chitra Mehta
- Deepak Chopra
- Delhi Drum Circle
- Delhi Fire Service
- Delhi Police
- Delhi Traffic Police
- Dharamshila Narayana Superspeciality Hospital, Delhi
- Dinesh Chandra Singhal
- Dinesh Kaushik
- Ela Trivedi
- Emerging Securities Pvt Ltd
- Gaurav Bhargava
- Genesis Studio
- Gian Bansal
- Gita Aggarwal
- Gurmanak Singh
- Harmala Gupta
- I W C Delhi Westend
- ICANDOIT Theatre Group
- Inner Wheel Club Of Delhi Vasant Kunj
- Inner Wheel Club Of Delhi Vasant Vatika
- Inner Wheel Club Of Gurgaon Sushant Vatika
- Interem Relocations
- Ishtihar
- Jawahar Arora
- JCBL Mobility
- Jungly Delights
- Kakade Swarup Rao
- Kaveri Ganguly
- Kavita Agarwal
- Kuljit Kaur Patiala
- Lalit Maheshwari
- Lions Club Delhi Antarang Dist. 321 A1
- Madho Dass Chabil Dass Goswami Charitable Trust
- Mandira V Bedi
- Manju Vaish
- Max Super Specialty Hospital, Saket
- Meena Rastogi
- Metta Foundation
- Mridula Seth
- Music Factory
- Mythily Shivkumar
- Nadira Chaturvedi
- Nalini Khullar
- Nalini Sehgal

Partners & Supporters

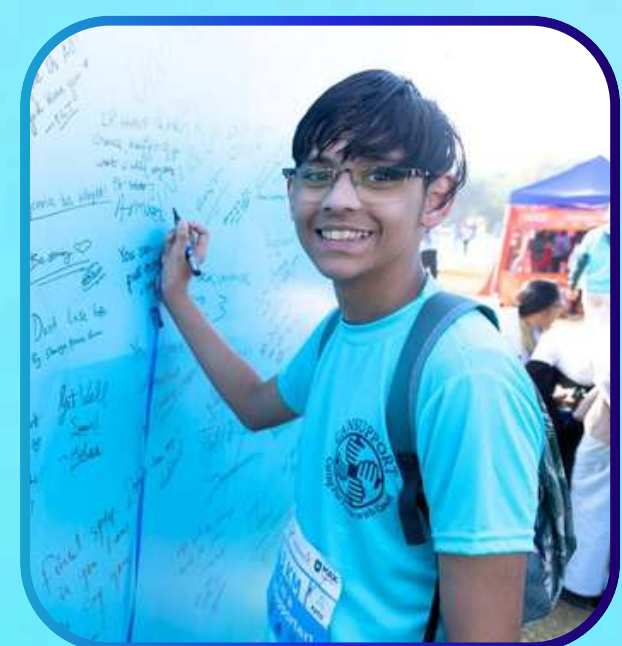
- Nalini Sharma
- Nandita Talukder
- Neelam Mohta
- Nestle Professional
- Nilima Chawla
- Patients For Patient Safety Foundation
- Prama Bhandari
- Priya Jain
- Project Help Vasant Kunj
- PSRI Hospital
- Punam Narendra Singh
- Rajeev Kumar
- Rajni Bhagat Arora
- Ramni Narula
- Rashmi Sobti
- Redcliffe Labs
- Redfort Harley Riders
- Renu Mital
- Romila
- Rotaract Club of College of Vocational Studies
- Rotary Club of New Delhi One, RI Dist 3012
- Rotary International District 3011
- Royal Mavericks
- Sai Aerobics Faridabad
- Sangeeta Gandhi
- Saroj Kapoor
- Shankar Nath Acharya
- Shikha Chugh
- Shilpa Dance Studio
- Shirin Jain
- Shree Chaturbhuj Foundation
- Shruti Khanna Suri
- Shweta Miglani
- Sindhu K George
- Som Mittal
- Swarn Vohra Memorial Foundation
- The Rajiv Gandhi Cancer Institute & Research Centre (RGCIRC)
- The Storydancer Project
- Trigon Ts Llp
- UE Life Sciences Marketed by Molbio
- Unibic
- Usha Chopra
- Vandana Chawla
- Vinita Idnani
- Vinod Dhamija
- VLCC Lajpat Nagar
- Yogeshwar Saran Kothiwai

On-Campus Walks

- Cambridge School, Greater Noida
- Cambridge School, Ghaziabad
- Cambridge School, Noida
- Cambridge School, Srinivaspuri
- DPS International Edge, Gurugram
- Dr. Bhim Rao Ambedkar College
- G. L. Bajaj University
- Genesis Global School, Noida
- Holy Family College of Nursing
- Le Cordon Bleu (India), GD Goenka University, Gurugram
- New Era Public School, Mayapuri
- Richmond Fellowship Society - Vishwas
- The Shri Ram Millennium School, Faridabad
- The Shri Ram School, Aravali
- The Shri Ram School, Mousari

Partners & Supporters

- Achala Kaul
- Active India Fab Expo
- Ambassador David Mulford and Mrs Jeannie Mulford
- Amit Srivastava
- Amrita Kapur
- Amulya Nidhi
- Anirudh Nair
- Anisha Kathpalia
- Anita Chawla
- Anita Marwaha
- Anjali Singh
- Anjana Bakht
- Ankita Jena
- Anubhuti Agrawal
- Anuradha Mittal
- Aradhana Chandna
- Aseem Charitable Education Trust
- Aseem's Library
- Bhanu Seth
- Bhupinder Kaur
- Big Muscles Nutrition
- Bikanervalva Foods



Scan to view the Highlights from Walk for Life 2026



OTHER HIGHLIGHTS

German Ambassador's Special Visit to Day Care

CanSupport was delighted to host Dr. Philipp Ackermann, German Ambassador to India & Bhutan, alongside embassy officials, for a Day Care session at our head office. Dr. Ackermann spoke with staff, learned about the activities that support younger patients and their families, and enthusiastically joined in the art and craft session, sharing easy laughter and warm conversation with everyone present. He was visibly moved to receive a hand-painted T-shirt and keepsakes lovingly made by the children under the guidance of long-standing volunteer Amy Potter, and reciprocated with a generous donation of stationery to the kids.



Participation in Great Eastern Foundation's Partners' Meet

CanSupport was proud to represent at the Great Eastern Foundation's Annual CSR Event in Mumbai that brought together senior leadership of the Great Eastern Group, Board Members, department heads, and representatives from 34 partner NGOs under one roof. Dr. Ambika Rajvanshi attended the Partners' Meet and presented a compelling overview of CanSupport's work, spotlighting the progress and impact achieved between April and December 2025. Beyond the presentation, the event sparked conversations with fellow NGO partners, key CSR stakeholders, and business leaders about meaningful collaborations and shared goals.



Pune's First Remembrance Day

CanSupport marked a meaningful first in Pune by holding a Remembrance Day at the Chest Research Foundation, Kalyani Nagar, bringing together over 200 caregivers and families to honour loved ones who were once in our care. The gathering was more than a memorial; it was a space to share stories, find comfort in shared experience, and be reminded that grief need not be carried alone. Through moments of reflection and connection, attendees were reassured of something that CanSupport holds dear: that every patient who passes through our care remains a permanent part of our family. For those navigating life after loss, sometimes the most healing thing we can offer is simply being together.



Palliative Care Without Borders - Jon Baines Tours

CanSupport hosted an international delegation from Jon Baines Tours as part of their 'Palliative Care in North India tour'. The visit to our head office by healthcare professionals and travellers from Australia, the UK, and Belgium, led by David Oliviere, was rich and wide-ranging. Department heads and team representatives walked the group through CanSupport's palliative care services and reach across India spanning the medical, nursing, counselling, and volunteering dimensions that together make the work possible. A lively Q&A followed, after which Zuleikha lightened the mood with an energising stress-busting activity. The gathering concluded on a warm note with a lunch prepared by youth from Butterflies, a charitable organisation supporting street-connected and vulnerable children, which was appreciated by all.



David Oliviere also facilitated a dedicated workshop for our counsellors titled 'The Elephant(s) in the Room: Loss, Grief & Bereavement', revisiting earlier sessions while introducing fresh perspectives on psychosocial palliative care, with a particular focus on the landscape of loss, change, and bereavement. The visit was, overall, as enriching for our team as it was for the visitors.



CanSupport on National Television

Dr. Ravinder Mohan appeared on Doordarshan India's Wellness Watch in an episode titled 'Defeating Cancer Against All Odds', joining Dr. Ashish Gulia, Director, Homi Bhabha Cancer Hospital & Research Centre, Chandigarh, for a timely discussion on cancer detection, prevention, and the medical advancements transforming outcomes for patients across India.

Scan to watch the full video



Harmala Gupta's Article for The Indian Express

In an opinion piece for The Indian Express, CanSupport Founder-President Harmala Gupta addressed the ethics of end-of-life care, emphasising that true dignity lies not in prolonging life at all costs, but in ensuring comfort, autonomy, and relief from suffering.

Scan to read the full article



Dignity of life should take into account the ethics of letting go

DIGNITY WITH dignity is one of the most vexing challenges we face today. It is a consequence of technological advances in the medical field that keep us physically alive but exact a huge toll in terms of psychological, social, financial and physical suffering. Not surprisingly, this has led to a devalued status for patients who are faced with unbearable suffering brought on by medical treatments that rob one of dignity, one should have the right to say "No more!".

Given this background, the recent Supreme Court judgment allowing a young man who had been in a vegetative state for 18 long years after a tragic accident to finally die with dignity is welcome. However, the elderly parents should not have had to petition the courts over a number of years.

Surely, it could have been dealt with in a speedier manner by the doctors themselves when they realised that there was no hope of recovery.

The procedure to be followed when there is no hope of recovery, regardless of whether a signed advance medical directive (AMD) is available or not, was clarified by a Constitution Bench of the Supreme Court in 2019 in response to an application filed by the Indian Society of Critical Care Medicine.

The need to act expeditiously, while also laying down safeguards, was emphasised. These require constituting a primary medical board in the hospital where the patient is being treated, as well as a secondary medical board that would include experts from outside the hospital to provide oversight. Both are to give their decisions, ideally, within 48 hours. This practice was certainly not followed in this case. Discontinuing a treatment when you know that it is not in the interest of your patient, but will instead prolong suffering, upholds the Hippocratic Oath to which all doctors are sworn. This is ethical medical practice.

It requires caring doctors who are willing to spend time with the patient and relatives, explaining the pros and cons, listening to their concerns, and honouring the AMD if available or the wishes the patient may have expressed to their loved ones or a surrogate when able to do so.

The medical community, too, needs to come to a consensus as to whether removing a feeding tube or a breathing tube that is doing the patient more harm than good falls within the realm of ethical medical practice, or should be considered 'passive euthanasia', as the court termed it in the present case.

Palliative care staff working with patients with debilitating and life-limiting conditions in our country have been emphasising the need for palliative care teams to guide this process of care and provide a pathway once it is clear that there is no cure or hope for recovery.

They are willing to contribute to the setting up of end-of-life guidelines in healthcare institutions for these patients and their caregivers. Based on our 30 years of experience at CanSupport in looking after patients with serious health-related suffering, there is no doubt in our minds that palliative care — which ensures continuing quality of life, and death with dignity — must be universally available and made part of our public health-care system.

No one should have to bear the indignity of life-prolonging measures, strapped to a machine in the ICU, that only increase suffering.

To reiterate, ensuring quality of life as much as an intrinsic part of ethical medical practice as prolonging life. It is not about being humane or kind; it is the professional duty of the doctor who has sworn an oath to relieve suffering.

The writer is founder-president, CanSupport.



OUR SUPPORTERS

DONOR FEATURE



We extend our profound gratitude to the H T Parekh Foundation for their visionary support in fortifying CanSupport's home-based palliative care services. This strategic partnership has facilitated the successful deployment of the 'Seva at Home' application, a cutting-edge technological platform engineered to elevate the quality, coordination, and geographic reach of our specialized care for those facing life-limiting illnesses.

This digital transformation empowers our multidisciplinary teams across seven states with instantaneous access to critical patient records, ensuring that the care delivered within the sanctuary of a patient's home is as informed as it is compassionate. By streamlining complex documentation and enhancing symptom tracking, the platform significantly reduces administrative overhead. This efficiency allows our dedicated medical professionals to refocus their primary energy where it belongs: on preserving the comfort and dignity of every patient.

The H T Parekh Foundation's contribution represents a pivotal milestone in our journey toward a more responsive, data-driven, and patient-centered palliative care ecosystem. We are honored to partner with a foundation that shares our commitment to advancing the future of compassionate healthcare.

VOLUNTEER FEATURE



Kuldeep Kumar Ganju volunteers with CanSupport and his reasons run deep.

Kuldeep's wife underwent a prolonged battle with colorectal cancer for four years and eight months, during which she demonstrated exceptional grace and resilience. She drew strength from palliative care and the unwavering support of those who loved her as the family persevered through one of the hardest journeys a family can face. Her courage left an indelible mark on Kuldeep. Rather than step away from the world of cancer care after losing her, he stepped forward to turn his grief into purpose and personal experience into. It was her oncologist who introduced him to CanSupport and the organisation's commitment to providing free-of-charge care to underserved patients moved him to become a part of the mission.

In the nine months since joining as a volunteer, he has thrown himself into our work with full commitment. He participated in preparing hand-painted diyas for fundraising for Diwali and personally drove their sale. He rallied people to join the 19th edition of 'CanSupport Walk for life - Stride Against Cancer'. As a steady, familiar face at Day Care sessions, he shows up himself, actively engaging with the patients in our care and their caregivers.

For Kuldeep, volunteering is not charity. It is a continuation of upholding his wife's legacy and we are thankful for his contributions.



Volunteer with CanSupport

Looking to make a meaningful difference in the lives of cancer patients and their families? Volunteer with CanSupport and offer emotional support, companionship, and practical assistance where it matters most. You can support day care sessions, help organise awareness and fundraising events, or contribute your skills in content creation, administration, and creative projects. No special skills are required — just your time, compassion, and willingness to help. If you have a few hours to spare, join us and be part of a cause that truly makes an impact.

Contact: Navdha Bharadwaj | navdha@cansupport.org | 9599558368

Words of Appreciation for Our Teams

"I was introduced to the Cipla Foundation in Pune when my brother, Jagdeep Singh Dang's cancer had relapsed for the third time. A noble soul who had always given and cared for others had been in Dubai for over 2 decades. He had moved to Pune post operation for liver cancer and was advised to go for a liver transplant which was done in March. The procedure went smoothly however, certain complications arose after the surgery. To our disbelief, cancer relapsed in November. He became progressively weak, fragile, and unable to take any kind of medication for the aggressive growth. This was when Cipla support stepped in.

Even though we never moved him to the care centre, Dr. Kulkarni informed me about CanSupport. At the most difficult, challenging and disturbing time, their Dr. Amit, Sister Aarti, and the counsellor, rendered 24x7 support. From home visits to phone calls, the team was always there for us. It was so comforting speaking to them and they were available to answer all my concerns and doubts. My brother started feeling feeble one of the nights in January, which was a Saturday I remember. I was overwhelmed so I rang the doctor. He promptly answered and supported us all through the night till my brother's peaceful passing the next morning.

The team has continued being in touch and they even came with a senior member from Delhi to offer condolences which made us all feel cared for and supported. It reassured me that my brother's soul was in peace. I cannot express my gratitude to the CanSupport Team enough and just wish that may you all be blessed with more power to continue imparting strength to so many others who suffer."

- For Pune's Kalyani Nagar Team from a caregiver (patient's sister)

"I would like to express my heartfelt appreciation for the exceptional care and support provided by your team with Dr. Sanjay, Sister Kamla, Physiotherapist Kashif, and Counsellor Annu. Their dedication, compassion, and professionalism make a significant difference in the lives of patients and their families like it has for us. Your efforts are truly commendable."

- Brij Mohan, New Delhi

WE THANK OUR DONORS AND SUPPORTERS

GRANTS & DONATIONS RECEIVED FROM JANUARY TO MARCH 2026

₹ 1,00,000 and above

- Alkem Foundation
- Ambience Interiors Pvt Ltd
- Antelopus Selan Energy Ltd
- Aptia Group India Pvt Ltd
- Aruna Mehta
- Ashnoor Textile Mills Ltd
- Ashok Pandit
- Automat Industries Pvt Ltd
- AVL Technical Centre Pvt Ltd
- BorgWarner Emissions Systems India Pvt Ltd
- Cipla Foundation
- Dataflow Services (India) Pvt Ltd
- Dipankar Gupta
- DPS International Edge
- Emerging Securities Pvt Ltd
- Formula Corporate Solutions India Pvt Ltd
- Haricharan Halwasiya Charity Trust
- HelpAge India
- Idemia India Foundation
- Indian Oil Corporation Ltd
- Indians for Collective Action
- Kiran Tandon
- Lal Family Foundation
- Lalita Chauhan
- Prof. Manju Jain
- Mansukh Charities
- Mercedes-Benz Financial Services India Pvt Ltd
- Online Giving Foundation
- Oyster Bath Concepts Pvt Ltd
- Paramount Products Pvt Ltd
- Pathways School
- Pathways World School
- Prerna School of Inspiration
- Real Time Data Services Pvt Ltd

- SRF Ltd
- Salil Gupta
- Sentiss Foundation
- Shades of India Crafts Pvt Ltd
- Shankar Nath Acharya
- Sunil Nehru
- Svam Toyal Packaging Industries Pvt Ltd
- Titan Logistics Pvt Ltd
- UK Online Giving Foundation
- Vaha Foundation

₹ 50,000 to ₹ 99,999

- Anju Gupta Memorial Trust
- Ashok Kumar Nehru
- Bina Aggarwal
- Ela Trivedi
- Globe Automobiles Pvt Ltd
- K Renu Rao
- Kalpana Singh
- Madho Dass Chabil Dass Goswami Charitable Trust
- Manjula
- Parveen Kumar Maingi
- Sunil Jakhar
- Trigon TS LLP
- Upinder Singh Kumar

In-Kind Medicines, Equipment and Rehabilitation Materials

- Atticus Foundation
- Inner Wheel Club of Delhi Midwest
- Inner Wheel Club of Delhi South
- MCKS Food for Hungry Foundation Delhi
- Rajni Bafna
- Rotary Club of Delhi Khubsurat
- Suresh Chandar
- Vandana Singal

Wish List

Requirements	Frequency	Quantity
Foldable Umbrellas	URGENT	340
Thermal Flasks	URGENT	340
Transparent Water Bottles	URGENT	400
Dry Fruits (250 gms each)	Monthly	20 packets
Children's Books (Hindi)	Monthly	40
Magazines (Hindi)	Monthly	40
Colouring Books	Monthly	40
Crayons	Monthly	40
Spoons	Annually	100
Forks	Annually	100
Bowls	Annually	100
Sectioned Plates	Annually	100
Trays	Annually	20
Crockery Sets	Annually	100
Water Glass Sets	Annually	100
Hand Towels	Annually	150

For any further details, please contact:
Rajni Bhatia 9667718209



**GIFTING
MADE
PURPOSEFUL!**

Sparkle Gift Cards (SGC) has launched an exclusive 'Collaborative Gift Card'

For directly supporting us:

- Visit sparklegiftcards.com/giftcards
- Click on 'Collaborative Card' from the four options, and
- Select CanSupport!

Scan & Assist
CanSupport



Livelihood Support

A cancer diagnosis can suddenly take away a patient's ability to work - and with it, their family's only source of income. For many of the people CanSupport serves, this means losing not just financial stability, but also independence and dignity. With your support, we can continue to help patients procure pushcarts and sewing machines which enable them to restart small livelihoods and get enabled to earn for their families again.

A modest intervention can make a life-changing difference: restoring self-reliance, reducing dependency, and giving patients the pride of supporting themselves even during treatment. Let us bring self-sufficiency and hope to someone in need!



Scan the code to learn more about how you can help or contact Navdha +91 9599558368 navdha@cansupport.org